

# Polyclonal Antibody to Human Topo III $\beta$

Catalog No. 2010-4 250 units

## Description:

A rabbit polyclonal antibody was prepared against a pool of oligopeptides derived from the carboxy terminal region of human topoisomerase III $\beta$ . The purity of the peptides was greater than 95% as determined by HPLC and mass spectral analysis. Approximately 10 mg of purified peptide were coupled (through a terminal cysteine thiol) to KLH with a heterobifunctional cross-linking agent MBS at a ratio of 1 part peptide to 1 part KLH. The antibody titer was determined by ELISA to be  $> 1:10^4$ . ***This antibody is ideal for Western blotting applications but has not been tested for other applications.*** The dilutions of antibody required for specific detection should be optimized for the investigator's particular system (cell line being used for example).

## Unit Definition:

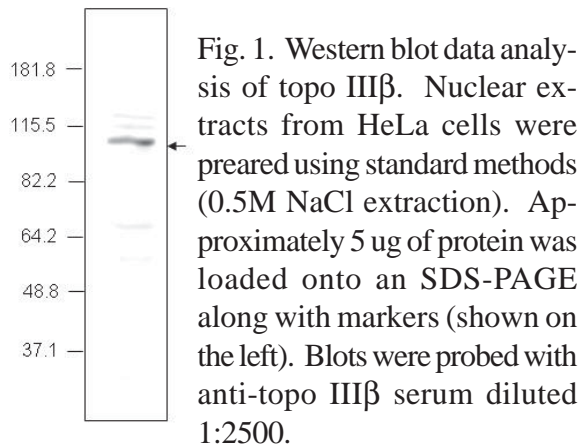
The antibody concentration is in Western blotting units; one unit corresponds to a 1:1000 dilution of the antibody required to make 1 ml of diluted probe for a routine Western blot. Thus, 10 units of antibody will make 10 ml of diluted probe.

## Vial Contents:

Cat #2010-4 contains 25 units of rabbit antibody (as serum) at 2.5 units/ul (100 ul total volume).

## Shipping/Storage Conditions:

The antibody is stable for short periods at room temperature (24 hours) but should be stored at  $-20^{\circ}\text{C}$  for longer term stability. The antibody is shipped at ambient temperature.



## Product Application and Disclaimer

This product is not licensed or approved for administration to humans or animals. It may be used with experimental animals only. The product is for in vitro research diagnostic studies only. The product is non-infectious and non-hazardous to human health. This information is based on present knowledge and does not constitute a guarantee for any specific product features and shall not establish a legally valid contractual relationship. TopoGEN, Inc. shall not be held liable for product failure due to mishandling and incorrect storage by end user. TopoGEN's liability is limited to credit or product replacement.

**TopoGEN, Inc.**

For orders: [www.topogen.com](http://www.topogen.com)

For Technical Questions: 614-451-5810 or

[support@topogen.com](mailto:support@topogen.com)

©TopoGEN, Inc.2008