

# Human Topo II $\alpha$ Marker Set

**Catalog No. 2011-3**

Cat # 2011-3  
Human Topo II $\alpha$   
Marker Set  
LOT#  
Store at -70°

## Description

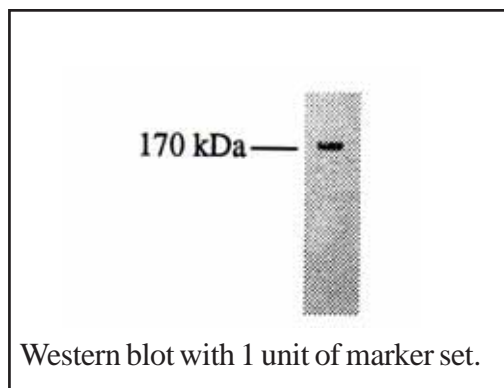
The Western blot marker set for topo II is used to unambiguously locate the position of the 170 kDa topo II. The human 170 kDa is present in SDS-PAGE loading buffer. Note that human topo II may break down spontaneously with prolonged storage or with repeated freezing and thawing cycles. TopoGEN, Inc. stipulates that the marker be 90% undegraded at the time of shipment; however, some degradation bands may be present.

## Vial Contents

-Cat #2011-3 contains 20 units of topo II marker (at 0.1 units/ul) in 1x SDS-PAGE load buffer. Total volume is 200 ul. The marker contains the 170 kDa topo II.

## Quality Control

1. The presence of the 170 band is confirmed by Western blotting; less than 5-10% degradation of the 170 band is detected.
2. There is no 180 kDa topo II in this preparation.
3. Loading 10 ul of extract is sufficient for use as a marker in Western blotting (note, 10 ul of marker will not be detectable by commasie blue staining).



## Product Application and Disclaimer

This product is not licensed or approved for administration to humans or animals. It may be used with experimental animals only. The product is for in vitro research diagnostic studies only. The product is non-infectious and non-hazardous to human health. This information is based on present knowledge and does not constitute a guarantee for any specific product features and shall not establish a legally valid contractual relationship. TopoGEN, Inc. shall not be held liable for product failure due to mishandling and incorrect storage by end user. TopoGEN's liability is limited to credit or product replacement.

**TopoGEN, Inc.**

For orders: [www.topogen.com](http://www.topogen.com)

For Technical Questions: 614-451-5810 or  
[support@topogen.com](mailto:support@topogen.com)

©TopoGEN, Inc. 2008