

Monoclonal Antibody to Human Topoisomerase I (optimized for Western Blotting and IP applications)



Catalog No. 2012-4 100 ug

Description:

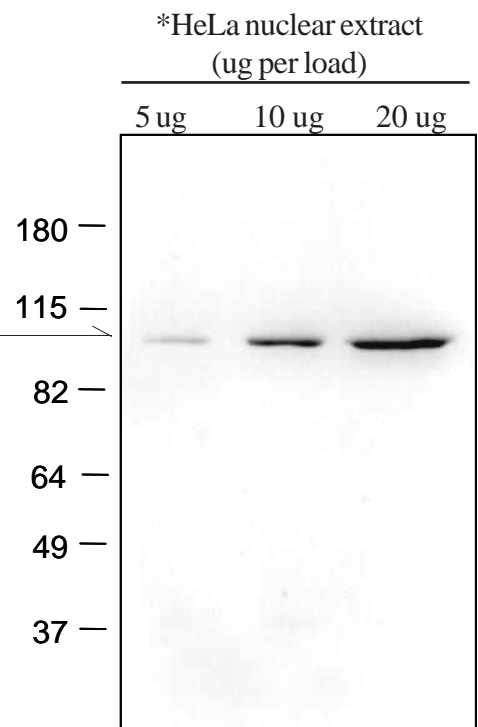
This monoclonal antibody was raised to human topo I (recombinant protein, overexpressed and purified) using standard methods. The antibody (IgG class) works very well for Western blotting experiments and immunoprecipitation. The epitope has not been mapped.

Vial Contents:

Cat #2012-4 contains 100 ug of purified monoclonal antibody (concentration at 10 ug/ul; total volume of 10 ul). For Western blotting applications, we recommend 1:10,000 dilution when probing crude nuclear extracts (see figure to the right). A single prominent band of 100 kDa was detected using fresh nuclear extracts. Since topo I can degrade, we recommend using fresh extracts.

Shipping/Storage Conditions:

The antibody is stored at -20°C and is shipped on dry ice.



Crude nuclear extracts were prepared from HeLa cells using the *protocol described on the website. Indicated concentrations of extract were prepared fresh and loaded onto an SDS-PAGE which was run with MW markers (left). Standard transfer and blotting was done using chemiluminescence. The probe was diluted 1:10,000 for this experiment.

*For Details on making nuclear extracts, visit www.topogen.com

Product Application and Disclaimer

This product is not licensed or approved for administration to humans or animals. It may be used with experimental animals only. The product is for in vitro research diagnostic studies only. The product is non-infectious and non-hazardous to human health. This information is based on present knowledge and does not constitute a guarantee for any specific product features and shall not establish a legally valid contractual relationship. TopoGEN, Inc. shall not be held liable for product failure due to mishandling and incorrect storage by end user. TopoGEN's liability is limited to credit or product replacement.

TopoGEN, Inc.

For orders: www.topogen.com

For Technical Questions: 614-451-5810

or support@topogen.com

©TopoGEN, Inc. 2009