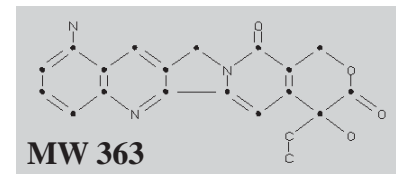
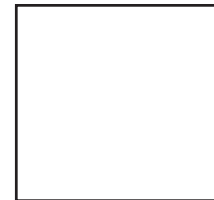


9-amino Camptothecin

Catalog Number:

4104 In DMSO (0.25 ml, 10 mM)



Description

9-Amino-20-(R,S)-camptothecin (also known as 9-amino campthecine) is an analogue of camptothecin. Like other CPT congeners, it shows some promising activity against a range of tumour types. This compound causes cell toxicity by stabilizing a ternary complex between the nuclear enzyme topoisomerase I (topo I) and double-stranded DNA, leading to single and double strand breaks. TopoGEN provides this reagent as a control poison/inhibitor of topoisomerase I. For in vitro cleavage detection, we recommend that the drug be tested over a wide range of μM concentrations; however, cleavages are strongly influenced by the amount of topoisomerase in the reaction as well as the type of assay being employed (SDSK+ vs. Radioactive End Labeled DNA vs. testing for plasmid cleavages). Note that large amounts of enzyme will be required to detect cleavage complex, compared to assays that measure catalytic activity.

Vial Contents

The drug is supplied already suspended in DMSO at 10 mM (0.25 ml) and is ready for use. The drug is pre-tested and shown to induce topo cleavages using purified human topoisomerase from TopoGEN (order on-line at www.topogen.com).

Shipping/Storage Conditions

The liquid product is shipped on dry ice. Store at -20°C .

Product Application and Disclaimer

This product is not licensed or approved for administration to humans or animals. It may be used with experimental animals only. The product is for in vitro research diagnostic studies only. The product is non-infectious and non-hazardous to human health. This information is based on present knowledge and does not constitute a guarantee for any specific product features and shall not establish a legally valid contractual relationship. TopoGEN, Inc. shall not be held liable for product failure due to mishandling and incorrect storage by end user. TopoGEN's liability is limited to credit or product replacement.



TopoGEN, Inc.

For orders: www.topogen.com

For Technical Questions: 614-451-5810

or support@topogen.com

©TopoGEN, Inc. 2008