

Human Topo I Marker Set

Catalog No. 2011-4



Description

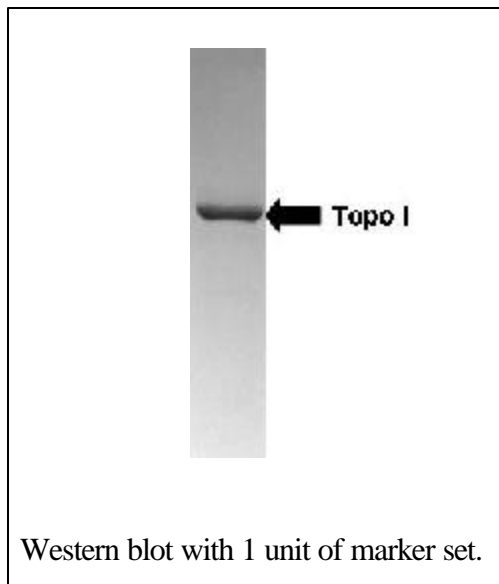
The Western blot marker set for topo I is used to unambiguously locate the position of the 100 kDa form of intact topo I. This product is supplied in SDS-PAGE loading buffer and ready to load directly onto an SDS-PAGE.

Vial Contents

-Cat #2011-4 contains 20 units of topo I marker (at 0.1 units/ul) in 1x SDS-PAGE load buffer. Total volume is 200 ul.

Quality Control

1. The presence of the 100 kDa band has been confirmed by Western blotting.
2. There are no extraneous polypeptides in this preparation.
3. Loading 10 ul of extract is sufficient for use as a marker in Western blotting (note, 10 ul of marker will not be detectable by commasie blue staining).



Product Application and Disclaimer

This product is not licensed or approved for administration to humans or animals. It may be used with experimental animals only. The product is for *in vitro* research diagnostic studies only. The product is non-infectious and non-hazardous to human health. This information is based on present knowledge and does not constitute a guarantee for any specific product features and shall not establish a legally valid contractual relationship. TopoGEN, Inc. shall not be held liable for product failure due to mishandling and incorrect storage by end user. TopoGEN's liability is limited to credit or product replacement.



TopoGEN, Inc.

For orders: www.topogen.com

**For Technical Questions: 614-451-5810 or
support@topogen.com**

©TopoGEN, Inc. 2005